

Zoning By-Law

TOWN OF KAPUSKASING

Rural Area - Schedule 'B'

Consolidated to December 31st 2022

Legend

- Urban Settlement Boundary
- Municipal Boundary
- Railway
- Lot Fabric
- Geographic Township
- Watercourse
- Waterbodies

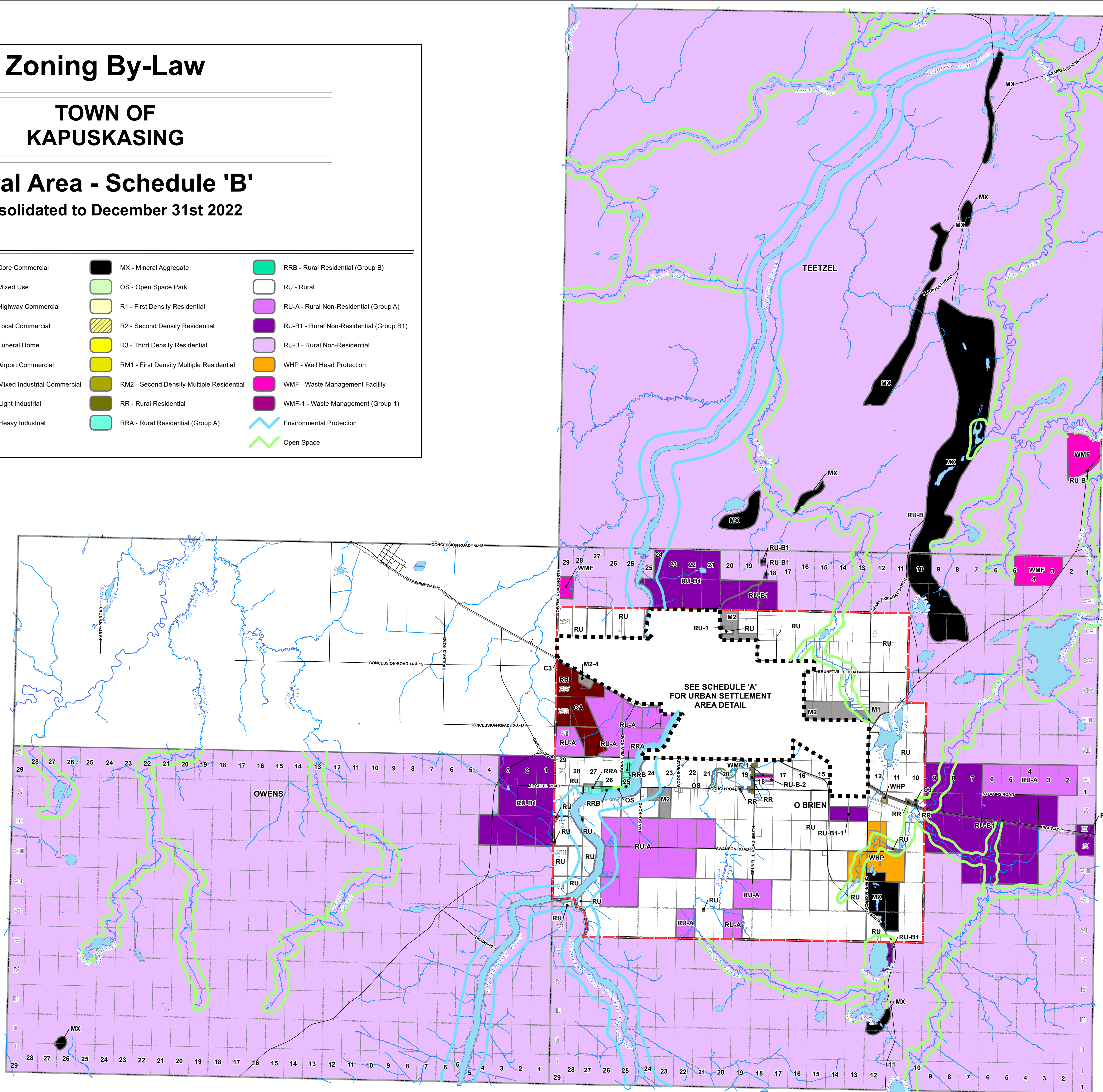
Zones

- | | | |
|----------------------------------|---|--|
| C1 - Core Commercial | MX - Mineral Aggregate | RRB - Rural Residential (Group B) |
| C2 - Mixed Use | OS - Open Space Park | RU - Rural |
| C3 - Highway Commercial | R1 - First Density Residential | RU-A - Rural Non-Residential (Group A) |
| C4 - Local Commercial | R2 - Second Density Residential | RU-B1 - Rural Non-Residential (Group B1) |
| C5 - Funeral Home | R3 - Third Density Residential | RU-B - Rural Non-Residential |
| CA - Airport Commercial | RM1 - First Density Multiple Residential | WHP - Well Head Protection |
| M1 - Mixed Industrial Commercial | RM2 - Second Density Multiple Residential | WMF - Waste Management Facility |
| M2 - Light Industrial | RR - Rural Residential | WMF-1 - Waste Management (Group 1) |
| M3 - Heavy Industrial | RRA - Rural Residential (Group A) | Environmental Protection |
| | | Open Space |

N



0 1 2 4 Kilometers



Data Source:
Source Data has been provided by the
Ministry of Natural Resources,
and The Town of Kapuskasing

Consolidated: December 9, 2022
Print Date: 26-Jun-2023
JLR No.: 28554 & 29380

